



Chung Chi College

EXCHANGE PROGRAMME 2025/26

BRIEFING SESSION



15 October 2024

17:00 – 18:00

Procedures & Timeline

Step 1: Preparation

- Assess your conditions
- Do your own research

Step 2: Application

- Prioritize your choices carefully
- Prepare documents required
- Pay attention to the deadline

Step 3: Interview

(if shortlisted)

- Be well prepared!!

Step 1: Preparation

Assess your conditions

- Goal(s) and expectation(s)
- Financial conditions
- Duration of exchange
- Study pattern
- Language Proficiency

Do your own research

- Information of targeted institution
- Financial support
(e.g. scholarships, travel loan,
College sponsors, etc.)
- Language requirements

Partner Universities



China

China Foreign Affairs University (Beijing)
Wuhan University (Wuhan)

Korea

Ewha Womans University
Seoul National University

Japan

Doshisha University
International Christian University
Keio University
Osaka University
Soka University

Singapore

National University of Singapore

Australia

The University of Western Australia

Partner Universities



Canada

McGill University
Simon Fraser University
University of Alberta

Germany

University of Bonn

Sweden

Örebro University

United Kingdom

University of Dundee

United States

American University
George Mason University
San Diego State University
University of North Carolina at Greensboro
(NEW in 2025/26!!) Wellesley College

Belgium

Katholieke Universiteit Leuven

France

Universite Catholique de Lille


Duration of Exchange

China

- One year
- Term 2

Other Countries

- One year
- One academic term NOT AVAILABLE

A stylized world map in shades of blue and light green, overlaid on a background of colorful, wavy diagonal stripes in shades of pink, orange, and teal. The map features several red location pins: one in North America, a cluster of five in Europe, a cluster of five in Asia, one in Southeast Asia, and one in Australia. A dashed white circle highlights the Southeast Asian region. A central orange rounded rectangle contains the text.

**What should I
consider for the
destination?**

Location & History



What should I consider for the destination?

**Location &
History**

**Local
Culture**

**What should I
consider for the
destination?**



**Location &
History**

**Local
Culture**

**Student
Population**

**What should I
consider for the
destination?**





Location &
History

Local
Culture

Student
Population

What should I
consider for the
destination?

Language
Proficiency



**Location &
History**

**Local
Culture**

**Student
Population**

**What should I
consider for the
destination?**

**Language
Proficiency**

**Academic Fields
Well-known**

A stylized world map in shades of blue and white, overlaid on a background of colorful, wavy stripes in shades of pink, orange, and green. Several red location pins are scattered across the map, primarily in North America, Europe, and Australia. Six callout boxes are arranged around the map, each containing text related to international study considerations. The central box is orange, while the others are light green or grey-green.

**Location &
History**

**Local
Culture**

**Student
Population**

**What should I
consider for the
destination?**

**Language
Proficiency**

**Transportation
Plan**

**Academic Fields
Well-known**



Location &
History

Local
Culture

Student
Population

Living Cost

What should I
consider for the
destination?

Language
Proficiency

Transportation
Plan

Academic Fields
Well-known

Specific Programme Requirements

Visit “Notices” on our website

- Admissions and Nomination Requirements of Individual Exchange Programme 2025-26 (to be available later)

Website

<https://www.ccc.cuhk.edu.hk/en/content.php?wid=139>



Step 2 Application

Deadline
31 Oct 2024
17:00 HKT

Prioritize your choice carefully

- Able to rank at most 10 institutions
Eligible to change the ranking if selected

Documents required

(at most 2 A4-size pages each)

- (1) **Photocopies of DSE result (first-year students)**
OR (2) **Latest CUHK academic report - unofficial transcript downloaded from CUSIS (other non-final-year students)**
- (a) A statement of all extra-curricular activities
AND (b) an essay in English with **NO MORE THAN 400 words** (with word counts at the end)
- Proof of language proficiency (if required)

Step 2 Application

Deadline
31 Oct 2024
17:00 HKT

IMPORTANT NOTES FROM OAL

(Section 2.2.1 (e) of
Outgoing Exchange Application and Policy
Manual (cuhk.edu.hk))

"Students who intend to go on exchange after their expected graduation date can only apply for exchange for **one academic term taking place immediately after their last active academic term** (excludes summer term) at CUHK. "

Online Application Form

A. ONE of the following in at most two (2) A4-size pages:

(a) For first-year students: Photocopy of DSE; OR

(b) Other students: Latest CUHK academic report - unofficial transcript downloaded from CUSIS (for other students)

(Formats accepted: Images (.jpg/.jpeg/.png) / MS Word (.doc/.docx) / PDF) *

Select Files

B. A single file in MS Word format (.doc/.docx) with at most two (2) A4-size pages including the following:

(a) a statement of all extra-curricular activities participated; and

(b) an essay in English of NOT MORE THAN 400 words to describe why you would like to join the exchange programme and how you would benefit from the programme. The applicant's name should be shown on top of each page, and the number of words at the end of your essay.

Certificates could be presented during the interview if preferred. *

Select Files

C. (Required by selected programmes only) A single file in MS Word format (.doc/.docx) embedding the certificate(s) of language proficiency, e.g. Japanese, French, and German etc.

For students who attended the language class(es) in CUHK can have that highlighted in the academic result.

(Submission by 15 January 2025 is accepted.)

Select Files

Step 3 Interview

Late-November –
Early-December

Before the Interview

- Set clear goal(s) and expectation(s)
- Familiarize with the programme(s) interested

After the Interview

- Review your own interview performance
- Consider your performance when you adjust the ranking
- Choose **ONLY** the programmes you are interested. It is **NOT** a must to fill up all 10 choices.

Important Dates

31 Oct 2024 (17:00 HKT)	Deadline for Application
Mid-Nov 2024	Announcement of Shortlisted Candidates & Interview Schedule
Late-Nov – Early-Dec 2024	Interviews (Reminder: Please inform us in advance if you cannot join the interview. All absentees without prior notification will be recorded.)
Mid-Jan 2025	Submission of (1) Updated priority (2) Academic report of 1 st term (3) Proof of language proficiency
24 Jan 2025	Announcement of offer
28 Jan 2025 (by 09:00 HKT)	Offer acceptance with \$3,000 deposit

During Your Exchange

Course Load Requirement (per Term)

- Minimum load: 9 credits
- Passing at least 6 credits
- OAL – Verification of full-time enrollment

Enjoy and Record Your Experience

- Take photos & videos
- Submit a report
- Prepare a 3-minute video clip

Your Roles

- Ambassador of CC & CUHK
- Ambassador of Hong Kong

Financial Support

Chung Chi College

- EYE Award
- Exchange Scholarships
- Travel Loan

Office of Academic Links (OAL)

- Financial Assistance for Exchange

Partner Universities

- International Christian University (Japan)

Others

- Japan: JASSO Scholarship for Short-Term Study
- May be eligible to live in hostel with the current rate in CUHK
- Government: Education Bureau



Chung Chi College

EXCHANGE PROGRAMME 2025/26

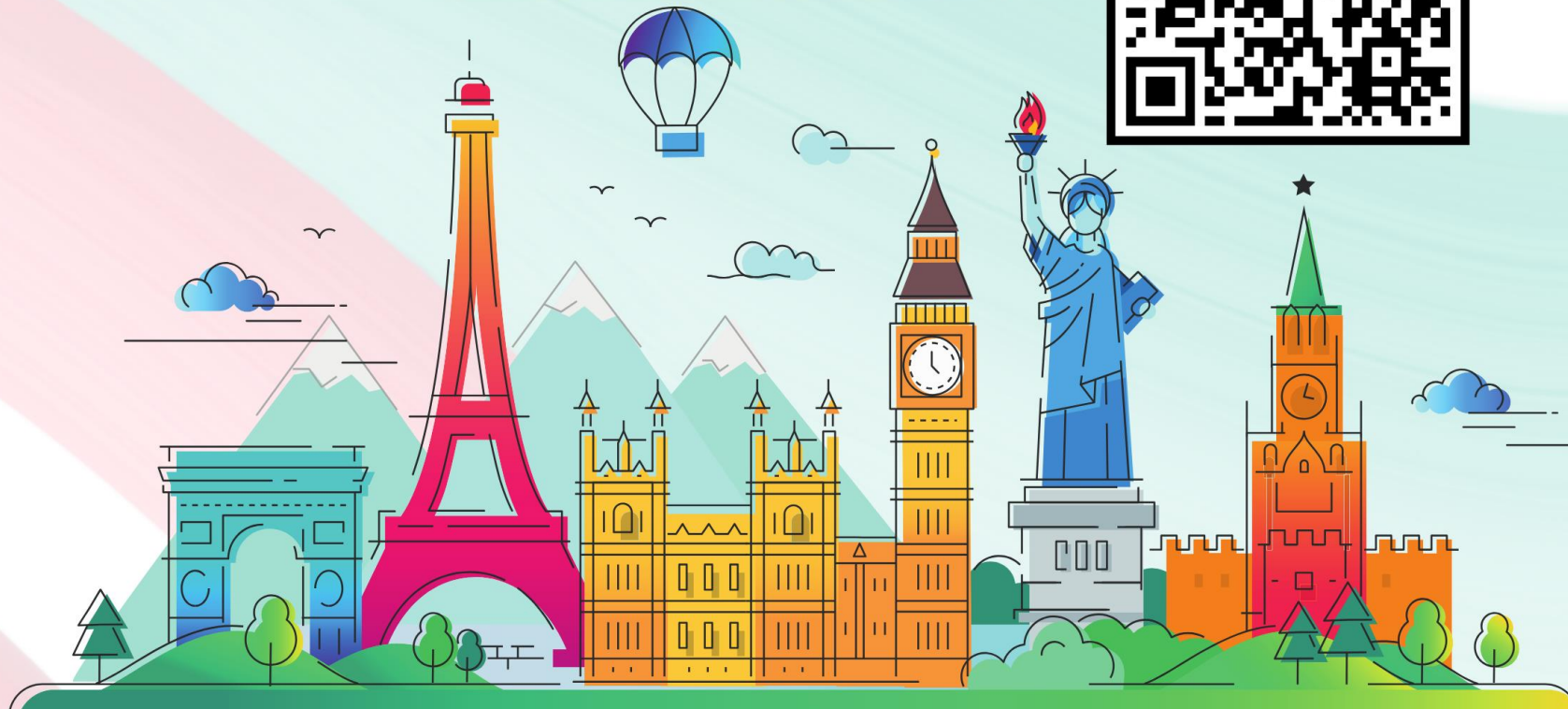
APPLY NOW



LEARN MORE



DEADLINE
31 OCT (17:00 HKT)



Further Information



**Chung Chi College
Exchange Programme**



**Exchange Programme
Managed by OAL**